

Wellington

2021
today



INSPIRED
pg. 26-31

INTELLECTUAL
pg. 32-37

INDEPENDENT
pg. 38-42

INDIVIDUAL
pg. 43-50

INCLUSIVE
pg. 51-57



WELLINGTON COLLEGE CHINA
惠灵顿(中国)





CONTACT Us

Wellington College China Central Office

+86 21 5185 3866 | www.wellingtoncollege.cn

Address: No. 1500 Yaolong Road, Pudong, Shanghai, China



Wellington College Tianjin

Wellington College International Tianjin

+86 22 8758 7199 | <https://tianjin.wellingtoncollege.cn/>

Wellington College Bilingual Tianjin Nursery

+86 22 8758 7199 | <https://tianjin-nursery.wellingtoncollege.cn/>

Wellington College Bilingual Tianjin A Level Centre

+86 22 8758 7199 | <https://tianjin-sixthform.wellingtoncollege.cn/>

Address: No. 1 Yide Dao, Hong Qiao, Tianjin, China



WCIT



WCBTN



WCBT CSF

Wellington College Shanghai

Wellington College International Shanghai

21 5185 3866 | <https://shanghai.wellingtoncollege.cn/>

Address: No. 1500 Yaolong Road, Pudong, Shanghai, China

Huili School Shanghai

+86 21 3177 5088 | <https://shanghai.huilieducation.cn/>

Address: No. 235 Linyao Road, Pudong, Shanghai, China

Huili Nursery Shanghai

+86 21 3158 0008 | <https://shanghai-nursery.huilieducation.cn/>

Address: No. 215 Tongwan Road, Pudong, Shanghai, China



WCIS



HSS



HNS

Wellington College Hangzhou

Wellington College International Hangzhou

+86 571 8369 6300 | <https://hangzhou.wellingtoncollege.cn/>

Huili School Hangzhou

+86 571 8239 6300 | <https://hangzhou.huilieducation.cn/>

Huili Nursery Hangzhou

+86 571 8239 6300 | <https://hangzhou-nursery.huilieducation.cn/>

Address: 2399 Xue Zhi Road, Xiaoshan, Hangzhou, China



WCIH



HSH



HNH

Wellington College China Institute of Learning

Address: No. 1500 Yaolong Road, Pudong, Shanghai, China

Contents

- 04 Opening Remarks
- 08 Our Heritage
- 10 Our Milestones
- 20 Wellington College China Institute of Learning
- 22 Huili Bilingual Education
- 24 Academic
- 26 Inspired
- 32 Intellectual
- 38 Independent
- 43 Individual
- 51 Inclusive
- 58 Voices of Wellington and Huili
- 72 We Are Wellington

FROM JOY QIAO
FOUNDER AND CHAIRMAN
WELLINGTON COLLEGE CHINA

THE VIRTUES OF HOLISTIC EDUCATION



2019-2020 marks the 11th year of Wellington College China's exceptional growth.

It gives me great pleasure to know that we have made such great achievements in this academic year. At a glance, our 2020 graduates have already received a total of nearly 200 university offers. Nearly 40% of whom received offers from universities ranked among the top 10 in the world. I would like to acknowledge the outstanding support and ongoing efforts of our pupils, parents and staff throughout this academic year. Thank you for standing by us as Wellington College China continues its journey to become a benchmark of the international education industry in China.

Our vision is to become the world's best bilingual education provider. Wellington College China has always been dedicated to providing our pupils with a top-quality international holistic education. Our pupils receiving great offers from top institutions is the best news I could hope for. What makes me the happiest, however, is that our pupils have selected a diverse range of

academic directions – the holistic education at Wellington College China has inspired them to pursue their passions. Studying at top institutions is but another step for them to achieve further success in their lives.

This is why Wellington is so important to me. It is why I am committed to bringing it to China to offer it to more young people, so they can learn more about themselves – who they are and what their passions are – before they leave school at 18.

To help pupils attain this, we have now established a number of scholarship programmes that will afford those with outstanding arts, sports and academic achievements, a chance to realise their potential and develop their skills further at one of our top-quality schools. We also offer the Shuping Scholarship. Worth over one million yuan, this unique scholarship provides exceptional working-class pupils in grade 9 or above the opportunity to experience a Wellington or Huili bilingual education. Through our many scholarship programmes, we hope to introduce pupils to a world



in which they can experience the virtues of holistic education and become inspired to learn, explore and achieve great things.

Despite the many challenges COVID-19 has presented to us in 2020, Wellington College China continues to grow. Construction of the new Jiashan and Nantong campuses continues according to a well-coordinated and comprehensive plan. Our other schools grow at a steady rate as well, with improvement in teaching quality being observed. Driven by our ethos and pursuit of excellent education, Wellington College China continues to stride forward with pride and confidence.

All Wellington and Huili pupils, parents and staff have shown great support to one another during this trying time. Your perseverance in achieving the same educational goals in the face of these obstacles has moved me deeply. It is because of all Wellingtonians that our future is made brighter.

Let's join together as we continue to stride forward and achieve even more amazing things at Wellington College China!

FROM HELEN KAVANAGH
CHIEF EXECUTIVE OFFICER AND GOVERNOR
WELLINGTON COLLEGE CHINA

WELLINGTON COLLEGE CHINA CONSTANTLY STRIVING TO BE THE BEST WE CAN BE



In last year's book I described what being a premium school means and shared that within Wellington College China we have a thirst for excellence and that we are *relentlessly restless* in its pursuit. This could not have been truer than in 2020 – the year of COVID-19. Little did we know that such an impactful phenomenon was to hit the World, affecting the lives of people across the globe forever.

And yet it is in such times of difficulty that those who are excellent distinguish themselves and stand out from the rest; so it was with our Wellington and Huili schools.

Our exceptional leaders showed the power of incisive decision making bringing back well over 90% of our overseas staff by the end of March. Our Government Relations team kept them well informed at all times so that optimum decisions could be made;

our HR teams went well beyond their job descriptions and tirelessly worked on behalf of all employees, but especially those returning to China, making their re-entry as comfortable as possible. The IT teams delivered magnificently, providing the support needed for our teachers to offer age-appropriate learning opportunities for all our pupils. Our Facilities teams performed wonders in preparing our campuses to open in a safe, but manageable way and then went on to complete all summer works programmes effectively. The finance teams had the unenviable task of trying to operate and forecast budgets amidst great uncertainty, and our marketing and admissions teams supported and promoted the whole group with their invaluable work-sharing the good news about Wellington and enabling as many children as possible to access a Wellington/Huili education.

And what next? Are we sitting back, basking in the glory of a job well done? Not at all, for a truly outstanding group knows that there is always more to learn, more to do, more to achieve. It relishes the opportunity to reflect: what could we have done better? Are we prepared in case there is a second wave here in China? Regardless of COVID, are there things we have learnt and can be put to good use?

A huge and resounding yes can be heard across WCC to all the above as we look forward to an even brighter future – the opening of two more schools by 2022 and the desire to go overseas by 2024 – but most of all the compulsion to offer the very, very best education to our current pupils so that they may go on in their adult lives, to bring positive change across the globe, making this World a better place to be, and proudly calling themselves Wellingtonian as they do.



OUR HERITAGE

Wellington College in England was founded by Queen Victoria in 1859 as a national monument to Britain's most renowned military figure, the Duke of Wellington, Field Marshal Arthur Wellesley, who also served the country with distinction twice as Prime Minister.

Over 160 years later, the College is one of the most respected schools in the United Kingdom and also one of its greatest educational institutions; pioneering, innovating and transforming education for girls and boys.

The College has educated thousands of pupils – or, as the school names them, Old Wellingtonians (OWs) – who have gone on to become ardent supporters of the school. The school's connection with the British royal family also remains strong, with HRH Queen Elizabeth II, her husband, HRH Prince Philip and other members of the royal family visiting the College on occasion.

Few schools have such deep ties with history and such a proud heritage.



ARTHUR WELLESLEY, THE DUKE OF WELLINGTON



OUR MILESTONES DEVELOPMENT HISTORY



December 2009 Ms Joy Qiao, Chair of Governors, Wellington College China, showed Her Majesty Queen Elizabeth II a model of Wellington College International Tianjin during the celebration marking Wellington College's 150th anniversary



February 2016 Wellington College Bilingual Shanghai's opening ceremony



July 2016 Ms Joy Qiao, Chairman of Wellington College China, meets with the 9th Duke of Wellington



September 2016 Ms Anna Shotbolt, First Secretary and Head of Education and Skills of the UK's Department for International Trade, visits Wellington College International Shanghai



November 2016 Mr Weng Zu Liang, Party Secretary of Commission of Pudong New District, meets with the governors of Wellington College China



January 2017 Huli Hangzhou' launch ceremony at Xiaoshan Science & Technology Polis



August 2017 Wellington College Bilingual Tianjin Nursery's opening ceremony



November 2009 Wellington College International Tianjin's groundbreaking ceremony



November 2012 Wellington College International Shanghai's groundbreaking ceremony



February 2013 Shanghai Lujiazui Group signs a strategic partnership with Wellington College in England



October 2015 Shanghai Lujiazui Group New Bund Investment Company, Ltd signs the Wellington College Bilingual Education Framework Agreement with Wellington College in England



February 2018 Ms Theresa May (third from the left), then UK Prime Minister, listens to our pupils' science project presentations. The event was followed by a group photo session with our pupils and Ms Joy Qiao (third from the right), Chairman of Wellington College China



June 2018 Ms Helen Kavanagh (third from the left), Chief Executive Officer of Wellington College China, attends an industry roundtable event in the presence of HRH Prince Edward, Earl of Wessex (sixth from the left) and several Chinese business leaders



September 2018 Huili School Shanghai's opening ceremony



September 2018 Huili Institute of Learning signs a Memorandum of Understanding with Durham University



September 2018 Huili Nursery Shanghai's opening ceremony



September 2018 Huili School Hangzhou's opening ceremony



September 2018 Wellington College International Hangzhou's opening ceremony



July 2019 The contract-signing ceremony for Wellington College Jiashan in Zhejiang Province



September 2019 Huili School Hangzhou is accredited as a member of the Council of British International Schools (COBIS)



September 2019 Wellington College China's 10th anniversary



December 2019 Mr Ronghua Wang, Chairman of Shanghai Education Development Foundation; Mr Jiaqi Gu, Chairman of Shuping Scholarship; and Ms Joy Qiao, Founder of Wellington College China, inaugurate the Huili Shuping Scholarship on the scholarship's 80th anniversary



March 2018 Wellington College China signs an agreement with Shanghai Education Development Foundation, establishing the Shanghai Education Development Foundation Huili Bilingual Education special fund

October 2019 Mr Ronghua Wang, Chairman of Shanghai Education Development Foundation, visits Huili School Shanghai



December 2018 Wellington College China and Pudong Education Centre for International Exchange launches the Wellington Pudong International Curriculum Alliance together



June 2019 Wellington College China held a contract-signing ceremony for Huili School Nantong marking the establishment of a Huili Bilingual School in Nantong Jiangsu



December 2019 Wellington College Bilingual Tianjin A Level Centre's inauguration ceremony



January 2020 Huili School Nantong's groundbreaking ceremony

WELLINGTON IN THE COMMUNITY HIGHLIGHTS



OUR MILESTONES

WellingtonCollege TIANJIN

2019

December 2019 Microsoft recognises Wellington College International Tianjin as a Microsoft Showcase School



2020

April 2020 COVID-19 campus reopening inspection teams from Hongqiao Public Security Bureau visit Wellington College International Tianjin



October 2020 Wellington College Tianjin holds 'Wellington Walks', a charity event to raise money for a minority primary school in Gansu Province and the Peizhi School in Tianjin



October 2020 Wellington College Tianjin holds a charity walk from Tianjin to Beijing to raise donations for children and charitable organisations in need

WellingtonCollege SHANGHAI

2019

December 2019 Local police conduct a safety education event at Huili Nursery Shanghai



2020

April 2020 Appreciation visit at the Pudong District Foreign Affairs for their support during the COVID-19 period



April 2020 COVID-19 campus reopening inspection teams visit Wellington College International Shanghai



April 2020 Appreciation visit at the Qiantan community for their support during the COVID-19 period



September 2020 Shanghai Lujiazui Group's 30th anniversary celebration held at Wellington College International Shanghai



OUR MILESTONES

WellingtonCollege HANGZHOU

2019

November 2019 Hangzhou Minjin Education Committee's inspection visit at Huili School Hangzhou



November 2019 Gaoqiao Middle School's exchange visit at Huili School Hangzhou



2020

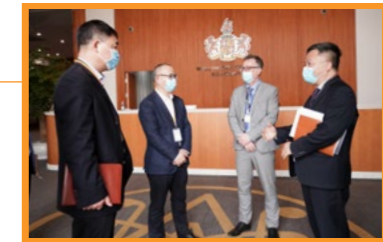
March 2020 Inspection teams from Hangzhou Education Guidance Centre visit Huili School Hangzhou in preparation of its full reopening



March 2020 Mr Xu Xun from Transfar Group, our Hangzhou landlord, donates COVID-19 supplies to Wellington College Hangzhou on behalf of the company



April 2020 Mr Yu Shenjiang, Secretary of the Party Committee and Director of the Education Bureau of Xiaoshan, Hangzhou visits and guides Wellington College Hangzhou in its work leading to its full reopening



June 2020 The Xiaoshan Science & Technology Polis Management Committee visits Huili School Hangzhou for Children's Day



July 2020 The Deputy Secretary of the Party Committee and Mayor of Shaoxing, Zhejiang visit Huili School Hangzhou



AWARDS AND ACCOLADES



OUR MILESTONES

EMPLOYER BRAND ACCOLADES



2020 Wellington College China wins 51 Job's Best Human Resource Management Company Award



Wellington College China wins HR Asia's Best Companies to Work for in Asia Award

WELLINGTON SCHOOLS ACCOLADES



2019 Wellington College Tianjin wins Sina Education's Most Parent-Trusted International School Award

2020 The Hurun Education Top International Schools report gave Wellington College International Shanghai a top 15 ranking (top 5 in its international schools ranking); Wellington College Tianjin ranked within the top 35



HUILI SCHOOLS ACCOLADES



Sina Education's International Education Brand Award 2020



2020 Huili School Hangzhou wins BEED Asia's Asia Characteristic School Award



2020 Huili School Shanghai is ranked in the top 100 in the Hurun Education Top International Schools report

WELLINGTON COLLEGE CHINA INSTITUTE OF LEARNING (IoL)

INSPIRING THE FUTURE OF EDUCATION

We achieve this through:

影响 IMPACT

RESEARCH THAT DIRECTLY INSPIRES LEARNING AND TEACHING

OPPORTUNITY 机遇

IMPACTFUL PROFESSIONAL DEVELOPMENT FOR EDUCATORS

成长 LEARNING

PARTNERSHIP AND EXCHANGE THAT DELIVERS EDUCATION REFORM



October 2019 IoL hosted the 'Inspiring Learning' forum, bringing together hundreds of attendees including leading researchers and educators from around the world.



October 2019 Professor Rob Coe delivered Assessment for Learning for Pudong Alliance school leaders and teachers.



November 2019 IoL welcomed delegates from the '2019 International Education and Language Development Forum' hosted by the British Council.



December 2019 Lesson observation and discussion event hosted for Wellington-Pudong International Curriculum Alliance, East China Normal University (ECNU) experts, Pudong Education Bureau and the Pudong English Inspector.



January 2020 Discussion with Hywel Roberts.



April - June 2020 IoL delivered several on and offline Leadership and Coaching training sessions for WCC teachers and non-academic staff.



July 2020 IoL worked with researchers at East China Normal University to develop a toolkit that can assist educators across China to improve the quality of teaching. ECNU specialists and Heads of Primary and Junior Schools from Huangpu District attended a discussion titled 'What is Great Teaching'.



September 2020 Wellington-Pudong International Education and Curriculum Alliance meeting.



THE HOLISTIC EDUCATION OF

HUILI:

AN INNOVATIVE APPROACH TO BILINGUAL EDUCATION IN CHINA

Wellington College China established Huili in 2018 to provide a world-class education to Chinese pupils, bringing together the strengths of Chinese education supplemented by the world's best practices in holistic education. The first Huili schools and nurseries opened in Shanghai and Hangzhou in September 2018.

The aims and objective of a Huili bilingual education are:

- For pupils to be patriots who celebrate their Chinese identity with a passion for China, its history, heritage, culture and traditions
- To achieve academic excellence through using the rigorous Chinese national curriculum crafted curriculum structure and content
- To provide a rounded education approach founded on the best research-based practices in holistic and progressive education from around the world
- To facilitate holistic development through a broad and balanced curriculum experience
- To cultivate bilingual talents in the international context

INNOVATION IN PEDAGOGY: INTERDISCIPLINARY THEMATIC LEARNING

At Huili the curriculum is structured around thematic units with learning goals and content that are founded on the Chinese national curriculum standard and linked to the English national curriculum standards, as well as the Huili model to foster more in-depth learning. The carefully crafted thematic units thread together learning across different subjects and allow pupils to apply cross-disciplinary skills. This teaching method facilitates cognitive links between subjects and strengthens both the understanding and application of knowledge. Throughout the learning process pupils are inspired to develop their capacity to communicate, collaborate and innovate through the creative use of their intellect, knowledge and skills.

INNOVATION IN BILINGUAL TEACHING: CONTENT AND LANGUAGE INTEGRATED LEARNING

Huili defines a bilingual as an individual who can make a seamless transition between the two languages of instruction. A bilingual person can read, write, understand, think and speak in the two languages without hindrance at all levels; this is to say that they can make their age-related intercultural and linguistic transitions seamlessly, whether it be for study, business or leisure. Ultimately, bilingual learners think, dream and tell jokes in the two languages.

At Huili, Chinese and English-speaking teachers work together when planning units of study. They are committed to balancing subject and language knowledge to create a genuinely immersive bilingual learning environment for children, to ensure the parallel development of both languages through a Content and Language Integrated Learning (CLIL) model, which aims to strengthen students' language learning while remaining in alignment with their age-related educational development. CLIL emphasises the functional aspects of language, making language learning more natural and practical. Through planned and purposeful immersion, Huili pupils communicate and apply language structures and skills to the intellectual rigour of subject-based cognition. Interdependence is generated between the two languages of instruction, allowing bilingualism and biliteracy to develop alongside a child's cognitive development. Through metacognition, pupils are empowered to reflect on the purpose of language as a tool for effective communication.

ROBUST AND PURPOSEFUL ASSESSMENT

Excellence in education requires accurate and purposeful assessment, not only as a means of recording and reporting pupil attainment but also as a body of formative evidence used to inform teaching and pupils of next steps as learners.

Acquiring accurate and reliable evidence of learning through assessment is complex. Huili schools draw on a range of approaches to ensure that assessment is valid, robust and purposeful; for instance, alongside typical approaches to assessments using written tasks, quizzes and tests, teachers will use the following methods that are known to provide accurate supplementary data:

- Observation of pupils working independently or in groups to solve a problem or task
- Structured and planned Socratic discussions between a teacher and a pupil or small groups of pupils
- Open-ended activities that demand pupils work individually or collaboratively with peers, over a sustained period that requires applying acquired knowledge to solve real-life problems

HUILI BILINGUAL EDUCATION

- Ongoing assessment of a wide variety of pupil-produced extended writing, presentations, oracy and investigations, among others. Each source of evidence is used to establish an overall understanding of what a child knows and can do in each area of the curriculum.

The Huili assessment framework articulates what pupils are expected to know and be able to do at each stage of their learning and for each subject. Importantly, attainment data generated by teacher assessment of learning is used extensively in a formative manner to inform and shape the learning process for each child and the work of teachers through a range of well-established strategies. Not only has this had a significant impact on learning in Huili schools, but also through a Huili Institute of Learning research project in partnership with local schools through the Pudong Education Bureau in Shanghai, where there was measurable evidence of enhanced pupil achievement and improved pupil motivation and self-regulation.

PASTORAL CARE AND WELLBEING

Pastoral care at Huili is central to the vision and ethos of Huili schools; it affects and influences every aspect of the educational journey a pupil experiences while at school and how educators operate and engage with parents. Pastoral provision serves as the nurturing and developmental experience of all the pupils in our care. Each child is unique, with individual needs, potential, limitations and opportunities. Our pastoral systems focus on the child as an individual and maximises the development of their potential.

The wellbeing programme is a significant feature of Huili's educational approach, with moral education and pastoral care playing a central role in all that we do. The house system provides a safe and caring community in which the school is vertically divided into four houses – Hui, Xian, Li and De – comprising pupils from each grade. The houses are led by housemasters, deputy housemasters and house tutors. Huili's pupils see their house as their home and, in the spirit of healthy competition, believe their house to be the best. In the house meetings, pupils can cooperate and mutually support one another in a sibling environment.

Huili staff are trained in wellbeing practices so that they can better help students develop emotional resilience and contentment. The programme is delivered in school every week, covering six significant areas of learning: personal, societal, emotional, educational, economic and mental health. Through purposeful, holistic educational programmes, Huili aims to help children grow into happy and resilient adults.

UNIVERSITY

OFFERS & EXAM OUTCOMES IN 2020

Out of the **200** offers received
nearly **40%** of our pupils were accepted at universities

ranked among the **TOP 10** in the world.

Our Tianjin A level pupils achieved **74% A*/A**

Wellington Shanghai IB average point score **38.5**

Top offers secured by Wellington College China pupils in 2020 (partial)

UNIVERSITIES IN THE UNITED KINGDOM

	University of Cambridge
	UCL (University College London)
	Imperial College London
	The University of Edinburgh
	University of Manchester
	King's College London
	The London School of Economics and Political Science
	University of Bristol
	University of Warwick
	Durham University
	The University of Sheffield
	University of Birmingham
	University of Leeds
	University of Nottingham
	University of St Andrews

UNIVERSITIES IN THE UNITED STATES

	UC Berkeley
	UC Los Angeles
	New York University
	San Diego
	Carnegie Mellon University
	University of Wisconsin
	Brown University
	Rice University
	Boston University
	UC Davis
	Purdue University

UNIVERSITIES IN OTHER REGIONS

	Hong Kong University
	University of Toronto
	Chinese University of Hong Kong

ART SCHOOLS

	University of the Arts London
	Rhode Island School of Design
	California College of the Arts
	School of Visual Arts
	Savannah College of Art and Design

This year's university admission season has been challenging, but with the passion, support and dedication from our professional academic and university guidance team, pupils at Wellington College China made great strides in university admissions in 2020.

Our pupils in Tianjin and Shanghai received nearly 200 offers from a number of world-renowned universities. Nearly 40% of our pupils received offers from universities ranked among the top 10 in the world.

It is remarkable that in this year's university admission season Wellington College China received a total of 26 offers from members of the G5 grouping, namely University of Cambridge, University College of London, Imperial College London and The London School of Economics and Political Science. A number of Wellington College China pupils have proudly received offers from world-renowned schools, like Brown University; University of California, Berkeley; University of California, Los Angeles; Carnegie Mellon University and New York University.

We would also like to commend our pupils in Tianjin and Shanghai for achieving the school's best ever GCE, A-Level and IGCSE exam results. Despite the many challenges they faced this past year, our pupils persevered, persisted and truly gave their all.

Mrs Joy Qiao, Founder of Wellington College China, said,

"Our pupils receiving great offers from top institutes is some of the best news I could hope for. What makes me happiest, however, is our pupils going in a diverse range of academic directions – the holistic education at Wellington College China has inspired them to pursue whatever their passion is. Studying at top institutes is but another step for them to achieve further success in their lives."

Inspired

We want Wellingtonians to have been genuinely excited by everything they have done during their time at the College. They will have developed a zest for life so that they, in turn, go into the world ready and able to inspire others. This is the core pillar of the Wellington Identity.



PAVING THE PATH TO HIGHER LEARNING

Wellington College Tianjin

Our Festival of Higher Education hosted representatives from several of the world's finest colleges and universities. It was a great opportunity for pupils to get informed and explore the many higher education options available to them worldwide. Feedback from the wider school community was overwhelmingly positive, which has further strengthened our reputation as an authority on international higher education.





AN IMMERSIVE EDUCATION

Huili School Shanghai

Huili School Shanghai is proud of its challenging, engaging and varied arts curriculum. Last semester, our teaching focus for Chinese performing arts was Beijing opera.

We obtained a variety of exquisite and specially tailored costumes to give our pupils an immersive Beijing opera experience. It made all the difference in the world, and some pupils even represented the school in outside performance activities. This has inspired our teachers to continue their commitment to teaching our pupils about this essential facet of Chinese culture.



DIVING INTO

SELF-IMPROVEMENT

Huili School Shanghai | Wellington College International Shanghai
Huili School Hangzhou | Wellington College International Hangzhou

Our swimming programmes accommodate all swimming abilities, from beginners to advanced and even competitive. In keeping with Wellington College China's educational philosophy, swimming is a great way for our pupils to challenge and extend themselves and thereby become well-rounded athletes. Our teams, training sessions and competition schedules provide a number of new opportunities for pupils of all ages to participate in the sport.

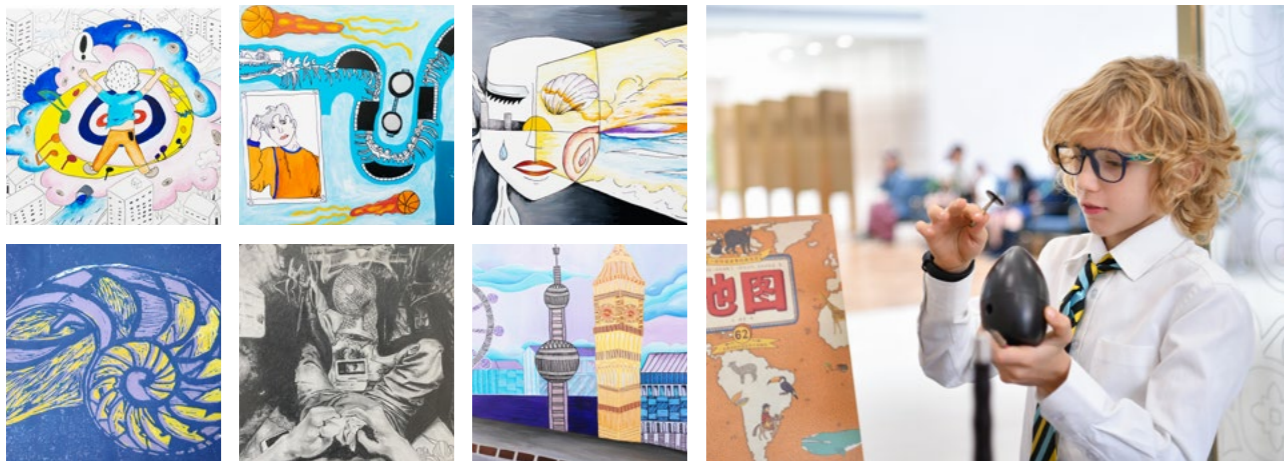




ENRICHING OUR PUPILS THROUGH THE ARTS

Wellington College Tianjin | Wellington College Shanghai

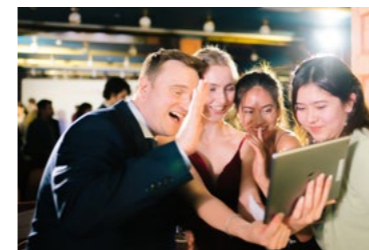
Exposure to the arts and the chance to foster creativity are unique advantages of a Wellington College China education. More than just a creative pursuit, studying the arts has long-term practical benefits, too. It demands visual intelligence, independent thinking and technical skill. Our arts curriculum introduces pupils to a wide range of media and techniques, such as painting, drawing, printmaking, collage, sculpture, digital media and textiles.



TAKING THE NEXT STEP FORWARD

Wellington College Bilingual Tianjin A Level Centre | Wellington College International Shanghai

After a uniquely challenging semester, the Class of 2020 graduates from Wellington School Tianjin and Wellington College International Shanghai bid a fond farewell to their alma maters as they embark on a new journey. The school planned a special celebration that brought them together with friends, family and teachers to reflect on their achievements and prepare to enter the world's top universities.





Intellectual

Wellingtonians must move into the world with the ability to think critically and to engage in deep learning. They will be able to study beyond the bounds of any curriculum, to be inquisitive and ask questions of everything around them, and be imbued with a life-long love of learning.



NEW CHALLENGES, BIGGER GOALS

Wellington College Tianjin



Last year, Wellington Tianjin became the very first Wellington International school to launch the Extended Project Qualification (EPQ). This qualification is equivalent to an AS-level and is held in high esteem by many of the United Kingdom's top universities, including Oxford and Cambridge.

The EPQ helps our pupils build a strong foundation for their future university studies. It enriches their learning by enabling them to explore areas beyond the scope of the A Level Centre and introducing them to innovative ways of thinking. The EPQ culminates in a 5000-word undergraduate-style dissertation accompanied by a presentation with a Q&A session.

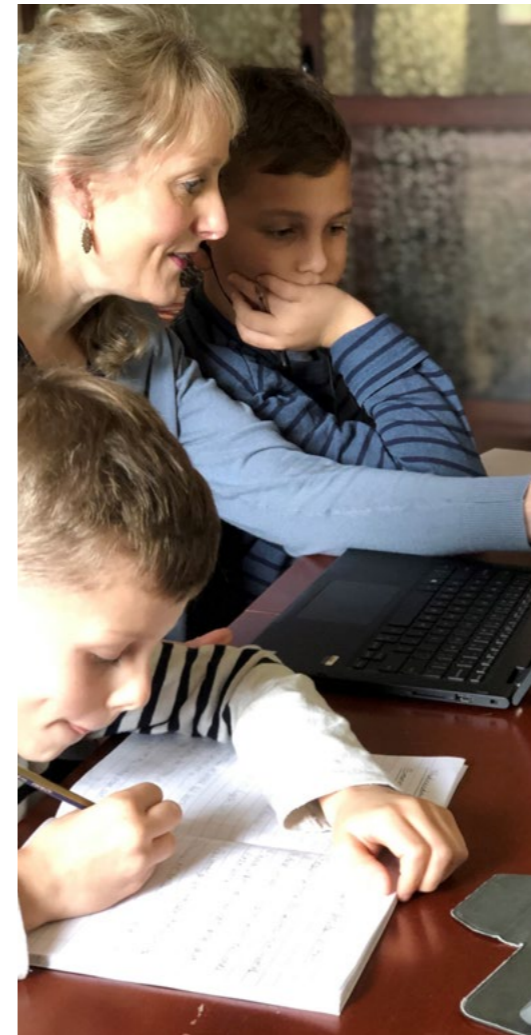




ROALD DAHL DAY

Wellington College International Shanghai

September is the birth month of British novelist, short story writer, poet, screenwriter and fighter pilot Roald Dahl. Every year, we celebrate this storied literary figure with a series of special events. 2019 marks the 14th annual Roald Dahl Day and celebrates 103 years since the birth of the beloved British literary figure. This year, we celebrated the anniversary of Dahl's birth in numerous ways, including dressing up as characters from his books or wearing yellow, which was his favourite colour. Pupils enjoyed a wide range of Roald Dahl-themed activities, and in their English lessons, they explored his stories and poems. The pupils then completed character descriptions, invented new characters in the author's style and wrote some 'revolting rhymes' of their own.

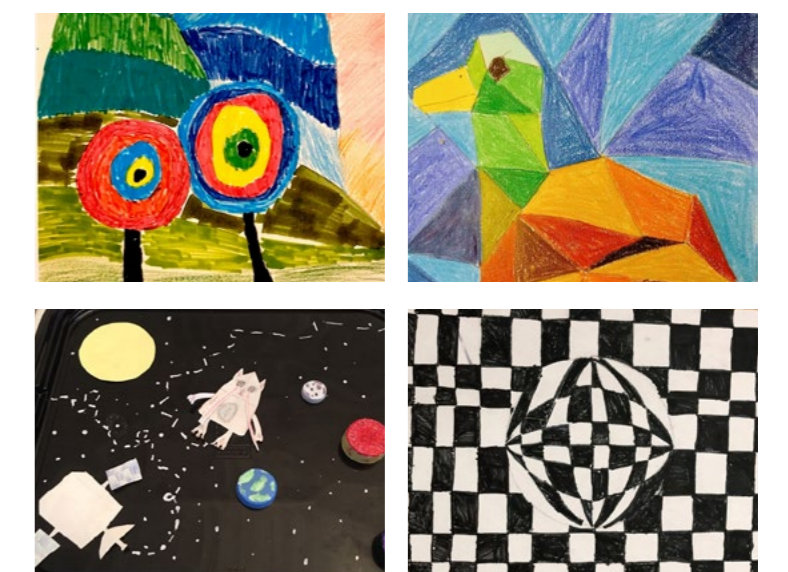
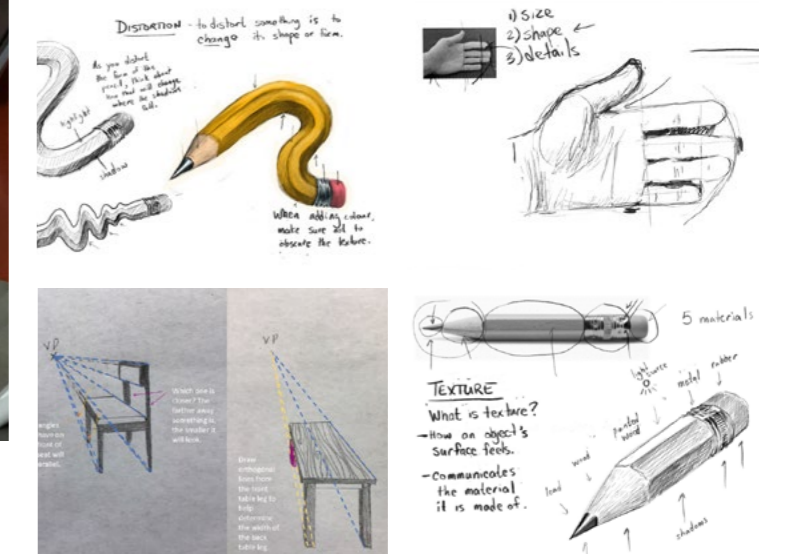


Wellington College Tianjin
Wellington College Shanghai
Wellington College Hangzhou

2020 will forever be remembered for the impact that COVID-19 had on all of our lives. During that time, e-learning became the new norm for parents, pupils, teachers and the wider school community.

We are proud of the work our pupils achieved during this uniquely challenging time. They will carry this valuable experience with them into the future as they become digital global citizens. Our community has learned a great deal about teaching in the virtual world. These valuable lessons will inform our teaching practices moving forward.

ADAPTING AND ADOPTING E-LEARNING TECHNOLOGY





MATHS WEEK

Wellington College International Hangzhou



Last year's Maths Week theme, 'Maths is Everywhere', provided an invaluable opportunity for our pupils to discover how maths can be applied far beyond the subjects they study in school.

Teachers of all subjects collaborated, developing educational, inquiry-based workshops that helped our pupils see maths in a different light. It was a delight to see our pupils flourishing in each area as they developed their inquiry-based practice, applied Wellington Values, took risks in their learning and cultivated a growth mindset.



SCIENCE WEEK

Huili School Shanghai

The second Science Week at Huili School Shanghai was held from 25-29 November last year. It was based around the theme of 'sustainable development'. Pupils from grades 3 to 7 had a number of opportunities to showcase their scientific achievements, including a pop-up museum, science exhibition and science show.

Science Week's thematic activities were designed to instil in our pupils a sense of civic responsibility expressed as 'caring for the world'. This enabled them to gain a deeper understanding of the United Nations' Sustainable Development Goals.



Independent

Wellingtonians will develop the personal, cognitive, social and study skills to enable them to cope with the challenges of university and their lives beyond it. They will adapt, cope and thrive within an ever-changing world.



BUILDING HOUSES WITH STRONG FOUNDATIONS



STRONG FOUNDATIONS

Huili School Shanghai

For Huili School Shanghai's first-ever house camping event, pupils spent the night at the school, where they participated in a number of fun and challenging team building activities. Pupils had the opportunity to build stronger bonds with their housemates and cultivate a sense of house spirit. More importantly, though, our pupils had the chance to make some lifelong memories.





LEARNING BEYOND

THE WALLS OF THE CLASSROOM



Huili School Shanghai



At Huili School Shanghai, education is not just confined to the walls of the classroom. Last year, grade 5 pupils embarked on an overnight trip to the city of Shaoxing. There, they enjoyed a day of action, adventure and enrichment as they kayaked, conquered their fears by rock climbing and took part in Chinese cultural experiences, like an immersive theatre show and Shaoxing Opera.



WELLINGTON'S AFRICAN ADVENTURE

Wellington College Tianjin

In July 2019, Wellington College Tianjin became the first international school in China to visit Kenya.

The tour started in the Masai Mara, where pupils witnessed the end of the Great Migration. They visited the Great Rift Valley and took a boat trip alongside the hippos of Lake Naivasha. After that, they challenged themselves on a 20km hike and bike ride among zebras and giraffes in Hell's Gate National Park. Finally, in Amboseli National park, they watched herds of enormous elephants enjoying dust baths at the foothills of Mount Kilimanjaro.

The trip also took them to a Masai village, where they learned how to dance like the Masai and attended a maths class in a local school. It was a wonderful, eye-opening 10 days for pupils and teachers alike, truly a once-in-a-lifetime experience!





HEALTHY, HAPPY AND FLOURISHING PUPILS

Huili Nursery Hangzhou

At Huili Nursery Hangzhou, wellbeing is defined as a state of flourishing. Children who are in a state of wellbeing are relaxed, energetic, open, confident, joyful and eager to be around others.

A focus on wellbeing encourages positive mental health in our pupils. It develops their emotions, boosts their confidence, improves their self-esteem and resilience and it expands their positive feelings. In an environment where children are understood and valued, they can build positive and meaningful relationships with others.



Individual

The aim of a Wellington education is to allow pupils to develop themselves fully in every sense, as we know that interested children become interesting adults. The pastoral care and focus on pupil wellbeing at the College values each and every pupil as a unique individual, helping them discover and develop their talents, passions and interests.



CARMINA BURANA



Wellington College Tianjin

In October last year, the Wellington College Tianjin Choir and Tianjin Symphony Orchestra performed Carl Orff's famous cantata Carmina Burana together at Tianjin Concert Hall.

The College has been a centre of musical excellence throughout its history and is well known across the region for its annual musical productions and seasonal concerts. Our pupils are all given the opportunity to study music, take up Western and Chinese musical instruments and perform regularly in public. This not only fosters musical talent but also helps young people to challenge themselves, build their confidence and self-discipline and push themselves to achieve things well beyond their own expectations.



SHAKESPEARE AT

WELLINGTON

Wellington College International Shanghai

Shakespeare occupies a unique position in English literature. Far beyond the shores of his homeland, his words and works are beloved by millions. Under the guidance of visiting professional actors from the Bell Shakespeare Company, our pupils breathed life into some of The Bard's best known plays. For one week, instead of their typical English lessons, pupils broke off into small workshop groups to explore Shakespeare in an immediate and dynamic way. By acting out scenes, our pupils tackled challenging subject matter, which helped them to develop oracy and performance skills and, most importantly, build confidence.





JACK AND THE BEANSTALK

Huili School Shanghai

The grade 1 classrooms at Huili School Shanghai were abuzz with excitement as children donned their costumes to perform their hilarious version of the classic tale, *Jack and the Beanstalk*. Lines learned and songs rehearsed, the children outdid themselves as they delivered a spectacular show which included dancing beans, stomping giants and, of course, the unforgettable Jersey the Cow!



MID-WINTER PERFORMANCE

Huili School Hangzhou

Studying music and the performing arts engages pupils in learning while helping them to develop valuable life skills, such as perseverance, collaboration, problem-solving, communication, self-assessment and creativity.

Last December, nearly 200 pupils from Huili School Hangzhou took to the stage for our Mid-Winter Performance. The evening featured riveting musical and dramatic performances that not only engaged the audience but showed our values of Courage, Respect, Integrity, Kindness and Responsibility being put into action.





FASTER, HIGHER, STRONGER

Wellington College Tianjin | Wellington College International Hangzhou

At Wellington, sport is about inclusion, enjoyment and the holistic development of our pupils' wellbeing. Each year for Sports Day, parents, teachers and community members come together to cheer our young Wellingtonians on as they compete in a wide range of fun and challenging games. Pupils participate in a variety of individual athletic events such as sprinting, distance throws and jumping, as well as representing their houses in various team sports.



TEAM BEFORE SELF

Wellington College International Hangzhou

The Wellington College Hangzhou girls' football team made great strides last year. The team's coach focused on improving the girls' basic footballing skills, knowledge and team play. As a result, the girls played in – and won – several fixtures against local international schools in Hangzhou. There were some stellar individual performances, but the greatest accomplishment was their ability to play together as a team. All players should be proud of the progress they made in such a short period of time. We look forward to seeing what they can accomplish next year!





FRIENDLY COMPETITION BUILDS HOUSE SPIRIT



Huilil School Shanghai

Semester One at Huilil School Shanghai saw three major house competitions. We kicked off the year with the grade 4 to 7 House Table Tennis Competition in which players in singles and doubles competed in a multi-week ladder tournament. After battling their way up the ladder, the eventual winners were De House, winning in both the boys' singles and girls' singles categories.



Inclusive

Wellingtonians will leave the College with the moral values and social conscience to serve others and do good in life. This inclusivity includes a strong pride in coeducation, and a commitment to understanding and appreciating our place as global citizens.





CELEBRATING CHINESE NEW YEAR AND OUR DIVERSITY

Wellington College Tianjin | Wellington College Shanghai | Wellington College Hangzhou

The 2020 Chinese New Year festivities at Wellington College China marked a very special occasion for all as we ushered in the Year of the Rat.

We encourage multiculturalism in our community, and it is not just about our pupils learning and working side by side. It is about fostering and facilitating an understanding and respect for all cultures. We all live, work and study in China. It is important that we take the time to celebrate Chinese culture, and there is no better time to do that than at Chinese New Year.

Celebrating Chinese festivals not only allows us to regularly revisit and reconnect with local customs, it also gives us a chance to show our love, care and support for each other as members of the Wellington Family.





HONOURING THE FOUNDING OF THE NATION



HONOURING THE FOUNDING OF THE NATION

Huili School Shanghai

To celebrate the 70th anniversary of the founding of the People's Republic of China, Huili School Shanghai conducted a series of activities based on the theme 'my country and me'.

Grade 1 pupils made paintings related to the idea of 'drawing the country in your mind'. Pupils in the higher grades wore costumes from different periods of Chinese history to show the connection between the past, present and future. Junior High pupils discussed current national events, covering a range of topics, from extreme natural events to Chinese animation, the concept of civic awareness and much more.



WARMING UP THE WINTER SEASON WITH CELEBRATION

Wellington College Tianjin | Wellington College Shanghai | Wellington College Hangzhou

Winter is a time when we all think about the importance of community, family and togetherness. At Wellington College China, we like to celebrate the seasons with a number of fun and festive activities. From bazaars and markets to dramatic performances and tree lighting ceremonies, our schools love to bring some good cheer to our tightly-knit, multicultural school communities.





PUTTING THE VALUE OF KINDNESS INTO PRACTICE

Wellington College Tianjin

In September last year, Wellington College Tianjin gathered its pupils and staff to raise money for charity. Fifty pupils from the Senior School, two teachers and our intern gave up the comfort of their beds by spending the entire night at school.

The pupils took part in several fun and engaging activities throughout the evening. Many even commented that it was "the best sleepover ever." Our pupils also learned a valuable lesson about the importance of helping those in need, and how fortunate they are to live in comfortable and safe homes.



WORLD FOOD DAY

Huili Nursery Shanghai

World Food Day at Huili Nursery Shanghai gave our pupils the opportunity to learn about food from around the world and the importance of sustainability. The pupils quickly discovered how the world must work together to end global hunger and become a Zero Hunger Generation. Two chefs also visited and showed each class how to make pizza and sushi. It was a fun-filled day that taught many valuable lessons about the food we eat and where it comes from.



VOICES OF WELLINGTON AND HUILI

IN DISCUSSION WITH THE MASTERS: THE WELLINGTON AND HUILI VALUES

The hard work and dedication displayed by Wellington College China's School Masters cannot be overstated. Their education ethos and personal commitments have a direct influence on the quality of our schools. We spoke to our Masters in Tianjin, Shanghai and Hangzhou to learn some of their insights on education and see how they are preparing for the year ahead.



▲ Julian Jeffrey
Master of Wellington College Tianjin

What do you think are the primary characteristics of a Wellington education?

At Wellington we talk a lot about the importance of a child's intrinsic motivation. In Western educational thinking, it is regarded as perhaps one of the most powerful signals of academic success. This poses the risk that parents and teachers see its expression – so profoundly personal – as somehow unchangeable. In other words, they theorise that a child's level of intrinsic motivation is inflexible, and something that no amount of work can change. I see this as too gloomy a view. Of course, children can develop and grow their intrinsic motivation, but it often takes the care, insight and skill of a great teacher (or parent) to draw this out. In this regard, Wellington's education makes a difference; it makes a real effort in helping its pupils realise their potential.

What do you hope to see from our Wellington pupils?

This year, our pupils have achieved the school's best ever results for their GCE A-Level and IGCSE exams: 31% of grades achieved were A*; 74% of grades achieved were A*-A; and 95% of

grades achieved were A*-B. Our pupils' success shows the entire community what can be achieved with hard work, a resilient spirit and the enduring support of skilled teachers.

I hope that our pupils can grow into young adults with great resilience, compassion, independence and confidence. I hope that they can bring positive changes to the world, and I hope that they will carry with them the characteristics that encompass what we know as the Wellington Identity - Inspired, Intellectual, Independent, Individual and Inclusive.

This year's pandemic has presented parents with many new challenges when it comes to selecting schools. What advice do you have for parents in this situation?

Schools and their families exist in a shared community. The unprecedented nature of this pandemic means we each have a responsibility to support one another. We are very lucky in Tianjin in that we have a community that maintains open, respectful and trusting mutual relationships between home and school. In this way, the uncertainties and threats which may accompany the pandemic can be overcome through dialogue, hard work and cooperation. If you, as a parent, feel that your child's school is struggling to respond to the fallout from COVID-19, always seek an open engagement with the school leaders as a first step – this can help avert any misunderstandings.

When helping children select a school, I recommend that parents find a place that treats their child as an individual; one that listens to you as a parent and that gives a voice to its pupils at all levels. Make sure you take the time to visit and meet some of the key staff – not just the head teacher. Try and arrange a visit during term time so that you can see and feel how the school operates when it is busy. Schools are very different places at weekends or during holidays. Finally, think about what the school represents in terms of its overall education: Wellington, for example, places its five core values at the centre of our community life. Parents who fully subscribe to a school's values will have a more fulfilling experience during their child's time at that school.

What expectations do you have for this school year?

This year we are welcoming more than 20 new international and Chinese teachers into the Huili academic team, including Ms Kulas, Founding Head of High School, and Ms Pietsch, Head of Primary, who has over 20 years of school management experience. I believe these two appointments will strengthen our team and help us achieve even greater goals.

As we begin our third year at Huili School Shanghai, we are pleased to welcome nearly 200 new families to our community. The Huili Family is a positive, inclusive and harmonious community bound together by the Huili values – Courage, Integrity, Respect, Kindness and Responsibility. With the help of our current teachers and support staff, we hope that our new arrivals will quickly settle in to their new surroundings.

This year's pandemic has presented parents with many new challenges when it comes to selecting schools – what advice do you have for parents in this situation?

Helping children select the right school for them is an important and difficult decision for all families. In making this decision, I believe it is crucial that parents choose the school that best suits their children's individual needs. Parents should use this time to assess their hopes and dreams for their children, and reflect on what they know about their interests, strengths and weaknesses.

After taking into consideration their goals and the child's own talents, parents can then begin to look for the most suitable school for them. Huili School Shanghai is a bilingual school; we hope to see our pupils exploring all facets of themselves and their talents, and we hope to see them becoming brilliant bilingual learners.



▲ **Stella Zhou**
Master of Huili School Shanghai and Huili Nursery Shanghai

What insights do you have about the development of education in the future?

One day the pandemic will be a thing of the past, and education will continue – as it always has. When the health of our communities ceases to be our primary concern, educators will be able to dedicate more time to the continuous development and self-realisation of their pupils.

The pandemic has allowed online learning to develop at an unprecedented rate. The unique advantages offered by digital education resources have given us a preview of an innovative new 'internet + education' model. This is an exciting development, but we also need to consider how this new approach to education can best align with the values and significance of traditional schooling.

The time and effort Huili School Shanghai has invested in developing a system for education in the digital era has not been in vain. With the support of our Information Technology department, we were able to optimise our education resources and ensure that all pupils received personalised learning support throughout our period of eLearning earlier this year. Information Technology has allowed us to adjust our teaching based on our pupils' needs, and this which has certainly made our teaching more 'intelligent'.

Huili School Shanghai cares about the continuous development of our pupils. A sustainable education plan provides opportunities for quality, long-term growth. We take care of the short-term and long-term growth of our pupils, and we hope to help them achieve their life goals.



▲ **Paul Rogers**
Former Executive Master of Wellington College Hangzhou
Executive Master of Huili School Jiasan (opening in 2022)

What insights do you have about the difference between education in China and other countries? Can two separate educational philosophies be successfully combined?

There are many differences – less so in the actual curriculums than in the style of teaching. The approach can be very different between teachers, partly because of culture and partly because of expectations. Our aim is always to bring the very best teaching pedagogy from both the East and the West and to combine – and subsequently improve – this until it suits our pupils the best.

The integration of Chinese and Western education is done primarily through the curriculum we teach. At Huili School Hangzhou, for example, we ensure that that all the Learning Objectives from the Chinese National curriculum and Zhejiang Province Guidelines are covered, yet we also focus on covering the best content and breadth of skills from the National Curriculum for England and the International Primary Curriculum. On paper that sounds fairly easy, but in reality, it is highly complex and it has taken us several years to perfect the merging of these curriculums.

What expectations do you have for this school year?

This year marks the third academic year of all three schools within Wellington College Hangzhou. 1,350 eager and excited pupils are keen to get back to normality after the upheavals of the past months.

What will our pupils see as they enter (or re-enter) Wellington College Hangzhou? The first thing might be the improvements and ongoing developments to the physical campus and the continuation

of projects that were already underway before the long break. What else will they notice? Perhaps most importantly – new staff! With increased enrolment and a move towards more specialised teaching as the pupils get older, we have been delighted to welcome a range of experienced, skilled and highly motivated new academic and non-academic staff to our school teams.

This year's pandemic has presented parents with many new challenges when it comes to selecting schools – what advice do you have for parents in this situation?

To visit the school is essential. Spend some time there, ask questions and get a feel for what the school is all about. Parents need to find out if the school is the right one for their child and they must be prepared to disagree with other views if they feel they are not justified. Every child is different. What is it that parents hope their child will get out of their education in a particular school? Is it a route to a good university? Is it happiness? Is it emotional development and adherence to values being followed more closely? Is it language development? An opportunity to encounter a host of new experiences? Hopefully it is all of these things and more. Parents need to find a school that they believe can deliver all of these things comprehensively and in complement to each other.

The pandemic may have disrupted many of our plans, but we must remain calm and think ahead. It is easy to panic and assume this situation will last for a long time, but I do not believe that is the case. COVID-19 will end and there will be a bigger demand for creative, independent, passionate and inquisitive learners than ever before. This is precisely the time when a Wellington/Huili education means the most.

What insights do you have about the development of education in the future?

I think we have to learn from the pandemic and how we, as a school, coped so well during that time. The lessons we learned from eLearning were enormous – much of what we learned can be embraced and reused as we move forward (e.g. educational podcasts, summer transition videos, live lessons for pupils not in Hangzhou, etc.).

As the world changes around us, being 'agile educators' has always been the Wellington way. We are not set in a belief that there is only one way we can educate, instead we understand that change is an inevitable and necessary element of providing a sustainable education for our pupils. What direction the education industry will take is difficult to gauge, but I do know that our teachers and non-academic staff have already shown themselves capable of taking on and rising to any challenge with skill and determination.



CONGRATULATIONS TO WELLINGTON COLLEGE CHINA'S CLASS OF 2020

Dear Class of 2020,

I am very proud of our graduates, and I would like to share three special words that best encapsulate my thoughts and feelings on this momentous occasion with you all.

The first word is 'passion'

I want to let you in on a little secret of mine: when I was in school, I didn't know what my passion was. I ended up studying Computer Science at Oxford University – I could do it, but I didn't love it.

I was good at maths and science, but the kind of education that I received when I was in school focused a lot on what we should do rather than what we wanted to do – which is probably true for

most in my generation in China, and probably still true for a lot of people in China today. As a good student, my time was filled with homework and exam preparation. I had very little spare time to pursue what I felt was my passion. 20 years on, I'm still trying to work out where my passions lie outside of my profession, and I see that as, almost, a regret.

This is why Wellington is so important to me, and why I'm committed to bringing it to China to offer it to more young people so they can enjoy what you have enjoyed. They can find out more about themselves – who they are and what their passions are – before they enter the world as young adults.

You're very lucky to be in this position. Very many congratulations.

The second word is 'diligence'

Passion is our destiny, but passion alone is not enough; it has to be matched by an equal amount of hard work. Graduation is a celebration of your own hard work, and it is also the perfect opportunity to express your gratitude towards your Masters, school leaders and teachers.

You probably don't realise how much hard work and rigour goes into tracking your progress, analysing your needs and putting together teaching plans that suit you as individuals. I have recently completed another cycle of board meetings for all of our schools, and I've seen a massive amount of data and reporting that demonstrates exactly that: the amount of time our teachers devote to their pupils extends far beyond regular school hours and classes – they are constantly searching for the best teaching tools, methods and innovations that will enhance our pupils' learning.

So, regardless of what you pursue, match it with an equal amount of hard work and you'll be well on your way to achieving excellence.

The third word is 'responsibility'

Our 2020 leavers have graduated in a year that is very special to all of us.

The COVID-19 pandemic has made me reflect a lot. Over the past few months, we have all been exposed to a massive amount of miscommunication and misunderstanding both inside and outside China through official news channels or social media. It saddened me to witness this.

It seems that a certain level of mistrust and blame-shifting between nations – and even the World Health Organisation – is on the rise. It almost seems like globalisation is working in reverse.

You probably don't know how special you are. You're not only fluently bilingual, you are also cross-cultural; you can appreciate and understand the world from both Eastern and Western perspectives.

The 21st century is a time when the East is meeting the West. Your linguistic skill and cultural insight means you have a special place in this world, and with that comes responsibility: whatever you pursue, whichever industry you get into, wherever you choose to work and live, you will be a bridge that connects the East with the West.

You will be facilitating communication and deepening the understanding and appreciation between Eastern and Western cultures, and as such, you will be contributing to world peace. Only as one united humankind can we truly pursue prosperity and peace. You must remember the responsibility on your shoulders.

You should always remember that your alma mater is home for you. Wherever your life takes you, you are always welcome to come back.

Once a Wellingtonian, always a Wellingtonian. Do come back and see us often.

Congratulations again.

Joy Qiao

Founder and Chairman
Wellington College China
30th June 2020





A CONVERSATION WITH THREE WELLINGTON

MOTHERS

Mothers play an important and indispensable role in our families. From infancy to adulthood, one cannot help but admire the amount of time and support a mother devotes to her children, and education is no exception. Mothers are also essential to the Wellington College China community. We sat down with the mothers of three Wellington College China pupils. Their children are Jack (year 12, Wellington College Bilingual Tianjin A Level Centre); Yichen (grade 7, Huili School Shanghai); and Hanni (grade 8, Huili School Hangzhou). Here, they share their perspectives on parenting, education and the Wellington College China community.

What kind of person do you want your child to become?

Jack's mother: Maybe it's because of my experience in the workplace – I started my business from scratch with Jack's dad and we encountered many challenges on the way – I hope that Jack can be a well-motivated person. I hope that he can follow his heart, adapt to the ever-changing future world and be willing to take on responsibilities along the way.

Yichen's mother: I hope that Yichen will have a healthy body and a healthy mind. I hope he will be curious and proactive when facing new challenges and exploring the unknown. I hope he will stay humble and earnest, and that he will embrace and appreciate people's differences with love and care.

Hanni's mother: I want Hanni to be happy, joyful, confident, strong, contented and thankful, but this is only my expectation. What type of person she would grow into – that depends a lot on the education she receives.

What kind of education do you want for your child?

Jack's mother: Jack experienced 'love at first sight' with Wellington College Bilingual Tianjin A Level Centre. Upon completing the written entrance test, Jack told me he had chosen Wellington. I asked him why, and he explained that his previous teachers would encourage pupils to guess the answers to exam questions they didn't know. Teachers at Wellington told him that he could face the exam with honesty and leave blank spaces on the answer sheet. Jack's feedback made me think that Wellington values authenticity and honesty in their education. The holistic education that Wellington advocates also suits our expectations well. Cultivating the *inclusive, inspired and respect* traits while not restraining the children's natural characters allows children to achieve their full potential here at Wellington.

Yichen's mother: After Yichen graduated from primary school, we wanted him to have a more liberal style of learning to help him become a model Chinese citizen with a global perspective. Choosing Huili was a natural decision for us, as the school shares the same values as our family. Two years later, I am impressed by Huili's integrated style of teaching. The school's curriculum combines China's national curriculum with the best parts of a British education.

The school's Wellbeing Programme is also impressive in how it fosters individuality among its pupils. Every week, the children attend a wellbeing workshop that explores several topics such as physical health, interpersonal relationships, worldviews, goals and significance. The programme seeks to help children develop better life skills and establish a well-rounded worldview that ensures these skills prove beneficial for the children later in life.

Hanni's mother: When I started looking for a secondary school for Hanni, I had a few ideas of what I wanted her school life to be like. I wanted a school that would focus on quality education while attending to children's physical health and personal development. Very few schools in Hangzhou met these expectations back then. Huili more than met these expectations. Learning about Wellington College China's successes in Shanghai and Tianjin, reassured us about the school's standards. One of the biggest deciding factors came after Hanni visited the campus. She was impressed by the teachers' personalities.

After enrolling at Huili, we were impressed by the school's commitment to its values and visions. Hanni has, on several occasions, noted that the respect and trust teachers have for their pupils is a great confidence booster.





What kind of mother do you hope to be?

Jack's mother: I have always worked full-time. I resumed work six days after giving birth to Jack, so I spent very little time with him when he was young. I still look for spare time in my hectic schedule to see Jack as much as I can. I am not always able to spend long periods of time with him, but I do try my best to be there to fulfil Jack's other needs.

Although I have had success in my career, the sense of achievement that my son's health and happiness bring me is by far the greatest success I could hope for. Sometimes I think that caring for my child is the most important achievement in my life. My child also bears witness to my successes and failures.

I once asked him, "Do you want me to come back home?" His reply was impressive and has stuck with me ever since. "If you could take care of me back at home that would be the best," he said, "But this might be unfair for you because you aren't only responsible for me – you are responsible for many other people as well."

Yichen's mother: When you have children, growing together as a family is a complicated task. Watching your children is truly a joy. New challenges often emerge as they grow, but we can face anything with our children. Through our children's development, we also see our growth as people and as parents.

A child's relationship with their parents often changes over time as well. When we guide our children, we get to demonstrate our attitudes and reactions to real-life experiences. Sometimes, children learn and achieve more than their parents ever did. We cannot help but be amazed by the new generation's ability to act and innovate.



Yichen's mother

At this moment in time, maintaining a warm and welcoming family for my child is my point of focus. For Yichen to have complete trust in us and feel like his family is his strongest support is the most important thing.

Hanni's mother: Having a full-time job and being a mother, I have come to realise that, no matter what path you take, there will always be challenges. As a working mother, my biggest regret was not spending enough time with my children. Now that I am a full-time mother, my daily schedule is hectic. I care for my elder daughter as soon as I put my younger son to sleep.

It is hard to say which role is more consuming, but I can say, "You can't have your cake and eat it, too." Once we make a decision, we must adjust our mindset and enjoy our lives as we shoulder our responsibilities. As the Chinese saying goes, "Motherly love is the greatest and the most selfless." I only truly understood this once I became a mother.



Hanni's mother



RECOGNISING EXCELLENCE WITH WELLINGTON'S SCHOLARSHIP PROGRAMME

Several years ago our close partner, Wellington College in England, set up a generous scholarship and dedicated 100% of its overseas income to providing grants and scholarships to its pupils. In line with this practice, Wellington College China has established a number of scholarship programmes to recognise excellence in academics, athletics and the arts. Our hope is to introduce pupils to a world that inspires them to learn, explore and achieve great things.

Giving back to society with the Shuping Scholarship

Founded in China in 1939. The Shuping Scholarship has benefited nearly 10,000 pupils, lifting them out of poor study conditions and providing them with the opportunity to excel. It is China's longest-running Scholarship programme with the largest number of beneficiaries in China to date, including Ms Joy Qiao, Founder and Chair of Governors of Wellington College China.

On the scholarship's 80th anniversary, Wellington College China launched the Huili School Shuping Scholarship programme in cooperation with the Shuping Scholarship and the Shanghai Education Development Foundation. This programme was created to give outstanding pupils in grade 9 or above a chance to study at a Wellington College China school regardless of their economic means.

The Huili School Shuping Scholarship is unique from the other scholarships that we offer because it is intended for pupils who come from working-class families in China. It provides full coverage of the recipient's tuition fees, expenses for meals, uniforms and boarding fees. In a sense, it is a '100% scholarship'.

Arts and sports scholarships

In keeping with its British educational heritage, Wellington College China values developing personality, leadership and creativity in its pupils. The arts and athletics play a vital role in this endeavour. To encourage pupils to delve deeper into the arts and sports disciplines, Wellington College China offers a series of scholarship programmes that recognise outstanding talent in the arts and athletics. We hope that through these scholarships we can help pupils meet their aspirations and perform at a level that admits them into one of the world's top universities.

Academic scholarships

To recognise pupils' academic achievements and to provide a Wellington education to outstanding pupils who may not be able to afford full tuition, Wellington College China also offers a variety of academic scholarships worth up to 100% of annual tuition fees. We seek pupils with academic ability, intellectual curiosity, strength of character, a capacity for independent thought and an international outlook.

Throughout history, scholarships have been important sources of support and incentives for pupils to further their achievements. Wellington College China wants to influence more outstanding pupils and is invested in upgrading our scholarship programmes. Through our scholarships, we hope to remind people that scholarships do not create achievements but rather opportunity and inspiration.

Learning is a lifelong journey; from infancy to adulthood. It takes strength and courage for a learner to make new achievements. Wellington College China hopes that its pupils can all make new achievements with flying colours.



Overview of Wellington College China's scholarship programmes			
	Shuping Scholarship	Academic scholarship	Individual scholarship
Target beneficiaries	Pupils in Grade 9 or above who come from working-class families in China	Pupils with outstanding academic performance, holistic development and great discipline who can demonstrate the Wellington values	Pupils with outstanding performance in the arts, sports and music disciplines
Scholarship amount	Up to 110% of the tuition fee, including meal expenses, uniforms and boarding fees. Awardees can potentially save more than one million yuan over three years of schooling	Up to 100% of the tuition fee	Subject to each school's policy arrangements. Awardees of the Elite Performance Scholarship (Athletic or Sporting Focus) at Wellington College International Tianjin and Wellington College Bilingual Tianjin A Level Centre are entitled to a tuition reduction of up to 100%
Schools that provide the scholarship	Wellington College Bilingual Tianjin A Level Centre Huili School Shanghai Huili School Hangzhou	Wellington College Bilingual Tianjin A Level Centre Wellington College International Tianjin Wellington College International Shanghai Huili School Shanghai Wellington College International Hangzhou Huili School Hangzhou	Wellington College Bilingual Tianjin A Level Centre Wellington College International Tianjin Wellington College International Shanghai Wellington College International Hangzhou

The eligibility criteria and application process for each scholarship are subject to each school's policy arrangements.

Contact us

Wellington College International Tianjin
Wellington College Bilingual Tianjin A Level Centre
+(86-22) 8758-7199 Ext 6027 | +(86) 136-4200-4609
admissions.tianjin@wellingtoncollege.cn

Huili School Hangzhou
+(86-571) 8239 6388
admissions.hsh@huilieducation.cn

Huili School Shanghai
+(86-21) 3177 5080
admissions.hss@huilieducation.cn

Wellington College International Hangzhou
+(86-571) 8239 6366
admissions.wah@wellingtoncollege.cn

Wellington College International Shanghai
+(86-21) 5185-3885 | +(86-21) 5185-3864
admissions.shanghai@wellingtoncollege.cn



WHY WELLINGTON COLLEGE CHINA IS A GREAT PLACE TO WORK

At Wellington College China, we strive to provide the best education possible to our pupils. But this would be impossible without an excellent team in place. We work hard at recruiting, cultivating and retaining talent in both our academic and non-academic teams. We aim to be a great place to work, just as much as we aim to be a great place to learn, and we have recently our efforts have been recognised by two of China's most respected authorities in Human Resources. We are proud to say that Wellington College China was recently awarded 51Job's 'Best Human Resource Management Company' Award, also known as the 'Best Employer Award'. Additionally, Wellington College China is honoured to be the only education organisation to have won HR Asia's 'Best Companies to Work for in Asia 2020' Award. These achievements were made possible thanks to the outstanding talent and excellent human resource management we have at Wellington

College China. This is what sets Wellington College China apart as an employer.

OUR INDUSTRY-LEADING SALARY AND BENEFITS PACKAGE

Every year Wellington College China attracts outstanding educators from around the world work for us in China. To date, we have almost 1000 talented academic and non-academic staff from 27 countries working at schools and institutions under Wellington College China.

• A stable, excellent team and low employee turnover rate

Thanks to its competitive salary and benefits package and all-round support for the career and professional development of its staff, Wellington College China has established an excellent reputation in the international education industry.

Wellington College China has a people-orientated, truth-seeking, practical, and innovative culture that enables the College to retain talent and remain as one of the education groups with the lowest turnover rate – at 8.7% – compared to similar groups in China. The employee satisfaction rate is also maintained at an industry-leading level.

• Competitive salaries

Each year, Wellington College China participates in an industry-wide remuneration survey, adjusting the salaries of our staff based on the survey results to ensure they are at a market-leading level. This year, Wellington College China continues to guarantee full salaries and benefits for all of our employees.

• Great paid time off packages and family benefits

Apart from great paid time off packages and benefits for staff members themselves, we proudly provide a wide range of benefits to our staff member's families, such as supplementary medical insurance. Additionally, staff members who enroll their children in our schools may enjoy a tuition reduction.

PROFESSIONAL TRAINING FOR LIFELONG LEARNERS

Wellington College China places great importance on providing training and development opportunities for our staff. We encourage them to be lifelong learners and want them to unleash their full potential in their careers.

• Huili Institute of Learning – continuous professional learning and training programmes

Established in 2018, the Huili Institute of Learning provides impactful professional learning and training programmes to help Wellington College China and its schools become leaders in the education community.

The Huili Institute of Learning offers a wide variety of employee training sessions on topics like middle leadership, teaching assessments, project-based learning, school-based research, co-planning, co-teaching and differentiation, effective behaviour management, English language acquisition, and teaching environment management. The Institute has delivered more than 1000 hours of teacher training and over 200 hours of professional learning and development to Wellington College China staff since its inception.

• Succession Planning, Coaching, and High Potential Leadership Programmes

Over the past two years, Wellington College China has introduced Succession Planning, High Potential Leadership, and Coaching Programmes. Through these programmes the College hopes to provide career and development opportunities for

our employees as part of a long-term plan to cultivate middle and top-level management personnel. At present, the Coaching Programme is available to staff from both the core management team as well as the High Potential Leadership Programme.

Wellington College China provides a series of industry-leading integrated professional learning and training programmes for our academic and non-academic staff with an aim to create opportunities for employees to develop lifelong skills.

• Opportunities for internal position rotations and promotions

In addition to comprehensive professional training support, Wellington College China notifies its employees of internal vacancies regularly in the form of a monthly bulletin. At the beginning of each year employees formulate their annual goals and discuss these with their line managers, who will then endeavour to provide relevant training and development opportunities to staff throughout the year.

EXCELLENT CAMPUS FACILITIES AND WELLBEING PROGRAMMES

Although they come from a variety of different backgrounds, we see each and every employee as a member of the Wellington family. We value multiculturalism and strive to create a diverse environment within our community.

• Cross-cultural events for staff

Wellington College China regularly organises cross-cultural events for staff, celebrating both Chinese and Western festivities such as Chinese New Year and Christmas. In the past we have held lighting ceremonies, Christmas dinners, and Spring Festival parties. Through a wide range of events, we make sure our staff's social and cultural needs are met.

• Excellent campus facilities

We offer top IT facilities, laboratories, theatres, tennis courts, basketball courts, football pitches, cricket courts, and swimming pools on all our campuses. Our schools organise weekly 'fitness camp' events, and we and provide our staff with yoga, swimming, and physical training classes. Staff may also borrow books from our libraries and use our sports facilities free of charge.

• Private mental health consultations

Our employees' mental health is important. We offer free one-on-one mental health consultation sessions for all our staff members with a mental health consultation hotline available anytime, anywhere.

As the saying goes, "It takes 10 years to grow a tree, and 100 years to form a good education." Wellington College China is constant work in progress, and we aim to keep raising the bar for our pupils and our employees.

We are Wellington

惠灵顿大家庭学校成员



WELLINGTON COLLEGE

Wellington College in the UK
英国惠灵顿公学



WELLINGTON COLLEGE INTERNATIONAL TIANJIN



WELLINGTON COLLEGE BILINGUAL TIANJIN NURSERY
天津惠灵顿双语幼儿园



WELLINGTON COLLEGE BILINGUAL TIANJIN A LEVEL CENTRE
天津惠灵顿国际课程中心



WELLINGTON COLLEGE INTERNATIONAL SHANGHAI



Eagle House School

Eagle House School
Eagle House 小学

Huili School Nantong (under construction)
南通惠立学校(在建)

Huili School Jiashan (under construction)
嘉善惠立学校(在建)



WELLINGTON COLLEGE CHINA
惠灵顿(中国)



上海浦东新区民办惠立学校
HUILI SCHOOL SHANGHAI



WELLINGTON COLLEGE CHINA
惠灵顿(中国)



上海浦东新区民办惠立幼儿园
HUILI NURSERY SHANGHAI



WELLINGTON COLLEGE CHINA
惠灵顿(中国)



杭州市萧山区惠立学校
HUILI SCHOOL HANGZHOU



WELLINGTON COLLEGE INTERNATIONAL SCHOOL BANGKOK

Wellington College International School Bangkok
曼谷惠灵顿国际学校



WELLINGTON COLLEGE INTERNATIONAL HANGZHOU



WELLINGTON COLLEGE CHINA
惠灵顿(中国)



杭州市萧山区惠立幼儿园
HUILI NURSERY HANGZHOU

