



WELLINGTON COLLEGE
INTERNATIONAL
SHANGHAI

SCHOOL CODES

CEEB: 694639

IB: 050582

UCAS: 41040

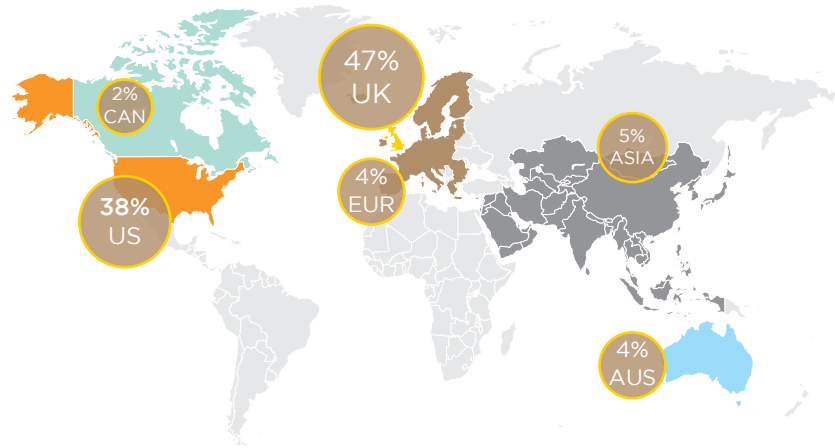
OUR SCHOOL

Wellington College International Shanghai was founded in 2014 in partnership with Wellington College, one of the world's top co-educational day and boarding schools originally founded by Queen Victoria in 1859. Wellington College in Shanghai is a private not-for-profit day school for pupils from 3 to 18 years. It offers a truly unique experience which combines, and builds upon, the best aspects of international and British education.

OUR VISION

The Wellington vision is based on a holistic model of education centred around a set of core values – we seek to encourage our pupils to become **intellectual, independent, individual, inclusive, and inspired**. This is the **Wellington Identity**. It is through the establishment of these values, in addition to a challenging academic provision, that we ensure that every Wellingtonian achieves academically whilst developing the strong skills and identity to be an effective global citizen and thrive within an ever-changing world.

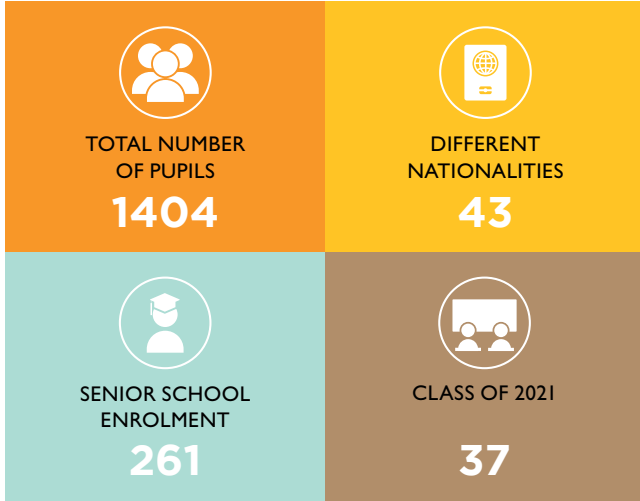
UNIVERSITY DESTINATIONS 2017–20



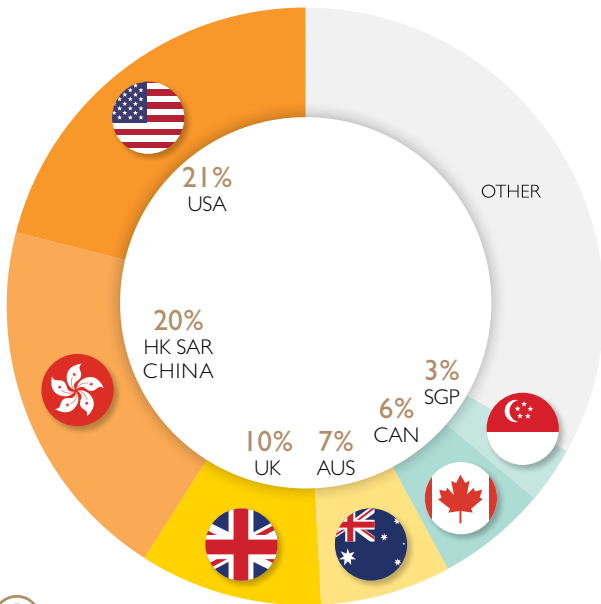
UNIVERSITY OFFERS AND ACCEPTANCES 2018–20

Pupils receive support and guidance when preparing their university applications through the school's own 'Higher Education Pathway'. They are encouraged to limit themselves to 10 applications worldwide each academic year and letters of recommendation are strictly confidential.

United States	University of California, San Diego	University of East Anglia UEA
	University of California, Santa Barbara	University of Exeter
	Boston University	University of Glasgow
	Brandeis University	University of Massachusetts Amherst
	Brown University	University of Notre Dame
	California College of the Arts	University of Southern California
	Carnegie Mellon University	University of Virginia
	Case Western Reserve University	University of Washington
	Claremont McKenna College	University of Wisconsin-Madison
	Emerson College	United Kingdom
	Fordham University	BIMM Institute
	Georgetown University	Birmingham University
	Haverford College	Brunel University London
	Maryland Institute College of Art	Durham University
	Middlebury College	Falmouth University
	New York University	Goldsmiths, University of London
	Northeastern University	Imperial College London
	Pratt Institute	Kings College London
	Purdue University	Leeds College of Music
	Rhode Island School of Design	Loughborough University
	Rice University	London School of Economics
	Santa Clara University	Manchester Metropolitan University
	Savannah College of Art and Design	Met Film School
	School of Visual Arts	Newcastle University
	Skidmore College	Queen Mary University of London
	Trinity College	The University of Edinburgh
	University of California, Berkeley	UCL (University College London)
	University of California, Davis	University for the Creative Arts
	University of California, Irvine	University of Bath
	University of California, Los Angeles	University of Birmingham
	University of California, Merced	University of Bristol
	University of California, Riverside	University of Cambridge
		University of East Anglia UEA
		University of Exeter
		University of Glasgow
		University of Leeds
		University of Liverpool
		University of Manchester
		University of Nottingham
		University of Sheffield
		University of St Andrews
		University of Surrey
		University of the Arts London
		University of Warwick
		University of York
		Asia-Pacific
		Lasalle College of the Arts, Singapore
		Singapore Management University
		Chinese University of Hong Kong
		Hong Kong Polytechnic University
		The University of Hong Kong
		University of Melbourne
		University of Nottingham Ningbo, China
		Yonsei University, Korea
		Yale-NUS College, Singapore
		Canada
		University of Toronto
		University of British Columbia
		Western University
		Europe
		University of Navarra, Spain
		Hacettepe Üniversitesi, Turkey
		Koc University, Turkey
		University of Maastricht, The Netherlands



MOST REPRESENTED PUPIL PASSPORTS



PARTNERSHIPS, ACCREDITATIONS & MEMBERSHIPS

Partnered with Wellington College UK

Accredited by

International Baccalaureate Organisation (IBO)

Council of International Schools (CIS)

Member of

Council of British International Schools (COBIS)

Association of China and Mongolia International Schools (ACAMIS)

Federation of British International Schools in Asia (FOBISIA)

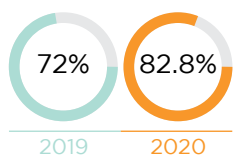
CONTACT INFORMATION

1500 Yao Long Road, Pudong District, Shanghai, PRC, 200124

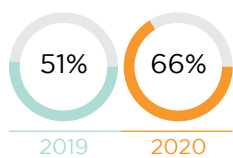
+86 21 5185 3866

shanghai.wellingtoncollege.cn

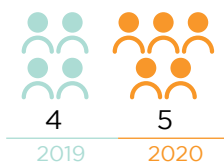
IGCSE STATISTICS



Percentage of high grades (7-9 or A-A*)

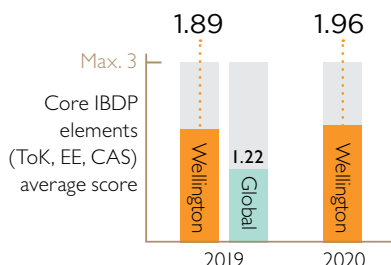
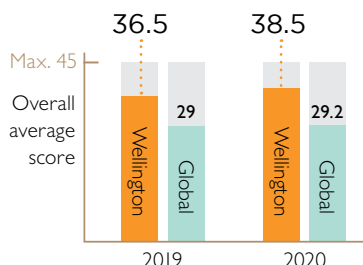


Percentage of pupils who achieved eight or more high grades (7-9 or A-A*)

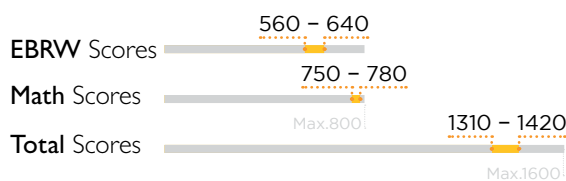


Pupils achieved perfect scores

IB STATISTICS



SAT SCORES



IB DIPLOMA SUBJECTS OFFERED FOR 2021 LEAVERS

Group 1 Language & Literature	Group 2 Language Acquisition	Group 3 Individuals & Societies	Group 4 Sciences	Group 5 Mathematics	Group 6 Arts
English Literature (HL/SL) Chinese Language & Literature (HL/SL)	English (HL/SL) Mandarin (HL/SL and Ab Initio) Spanish (HL/SL and Ab Initio) French (HL/SL and Ab Initio)	Economics (HL/SL) Business Management (HL/SL) Geography (HL/SL) History (HL/SL)	Biology (HL/SL) Physics (HL/SL) Chemistry (HL/SL) Design Technology (HL/SL) Computer Science (HL/SL)	Mathematics: Applications & Interpretation (HL/SL) Mathematics: Analysis & Approaches (HL/SL)	Film (HL/SL) Music (HL/SL) Visual Arts (HL/SL) Theatre (HL/SL)

ACADEMIC CURRICULUM

Wellington pupils follow a mixture of the International Primary Curriculum and the English National Curriculum from Nursery until year 9 (grade 8). Pupils then study the International General Certificate of Secondary Education (IGCSE) for which they receive an external grade in year 11 (grade 10). In years 12 and 13 (grades 11 and 12) pupils follow the International Baccalaureate Diploma Programme.

IGCSE – YEARS 10 AND 11 (GRADES 9 AND 10)

Wellington pupils take up to 11 individual examination subjects. Internally assessed work is marked according to the Wellington 1-7 scale whilst the IGCSE examinations taken at the end of year 11 (grade 10) are externally assessed using either a scale of A*-G or 1-9, with a letter grade of U indicating a failure to meet minimum standards. Grade conversion charts are included on all transcripts.

IB DIPLOMA PROGRAMME (IBDP) – YEARS 12 AND 13 (GRADES 11 AND 12)

All students start the IBDP in year 12 (grade 11) in preparation for university. Pupils choose from amongst 45 individual courses, and most will study 3 Higher Level (HL) and 3 Standard Level (SL) subjects as well as completing the core components including Theory of Knowledge (TOK) and the independently researched Extended Essay (EE). Creativity, Action and Service (CAS) is also an essential, and compulsory, element of the IBDP and involves all our pupils in a range of community and charitable work. The Diploma is marked out of 45 with a maximum of 7 for each subject and 3 points being derived from their performance in the core components.

SCHOOL CALENDAR AND GRADING

The school year is 181 days, typically running from mid-August to mid-June. It is divided into three terms. The school does not rank students or calculate grade point averages. In all courses, pupil progress is internally assessed regularly using pre-established, standards-based performance levels which are based on the school's own challenging age-related expectations. The primary purpose of these grades is to provide pupils with an ongoing measure of their achievement towards externally assessed examinations.

CO-CURRICULAR PROGRAMME

In addition to their academic classes, all Wellingtonians have access to a rich and varied co-curricular programme which is an integral and compulsory element of the school day. This encompasses a range of additional tuition in sports, the arts and academic enrichment designed to support and nurture the growth of the whole child.

SCHOLARSHIPS AND FELLOWSHIPS

Wellington offers a generous range of academic scholarships to pupils with strong academic backgrounds who reflect the values of the school. Those pupils with outstanding IGCSE results also become an IB Scholar, which provides a number of further opportunities.

The **IB Fellowship** is unique to Wellington College. It is awarded annually to pupils with the vision and ambition to tackle a key issue in society. Pupils, with the aid of a generous grant, create, fund and carry out a project designed to make a genuinely positive change in the world. Previous fellowships have seen pupils involved in conservation action and work in partnership with universities on educational initiatives helping to radically change people's lives.

UNIVERSITY GUIDANCE TEAM

Steve Tippen
Director of Higher Education
stephen.tippen@wellingtoncollege.cn

Yvette Huang
University Counsellor
yvette.huang@wellingtoncollege.cn

Joshua Beard
University Counsellor
joshua.beard@wellingtoncollege.cn

SCHOOL LEADERSHIP

Eleanor Prescott
Principal / Head of Senior School
eleanor.prescott@wellingtoncollege.cn

Ewan McCallum
Head of Sixth-Form / IB Coordinator
ewan.mccallum@wellingtoncollege.cn